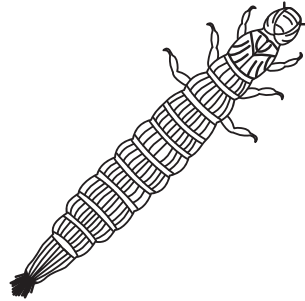
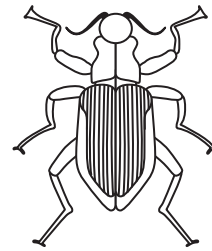


RIVER MACROINVERTEBRATES

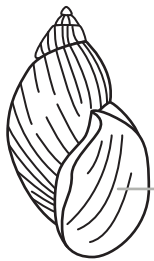
Intolerant to Poor Water Quality



**RIFFLE BEETLE
(LARVA)**

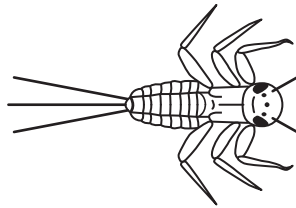


**RIFFLE BEETLE
(ADULT)**

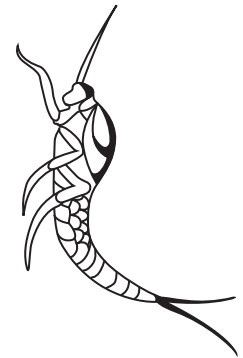


opens to
the right

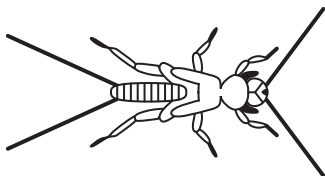
GILLED SNAIL



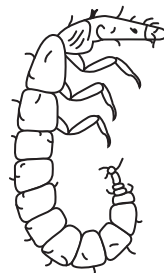
**MAYFLY
(NYMPH)**



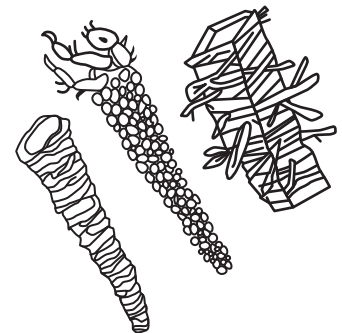
**MAYFLY
(NYMPH)**



**STONEFLY
(NYMPH)**



**CADDISFLY
(LARVA)**

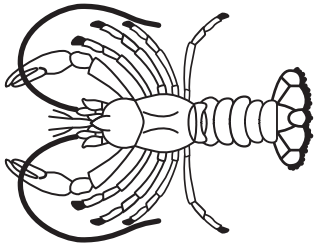


**CADDISFLY
(LARVA)**

RIVER MACROINVERTEBRATES

Tolerant to a Wide Range of Water Quality

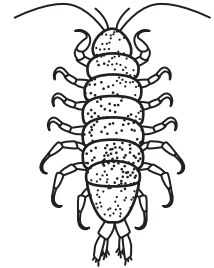
Tolerant of a wide range of water quality.



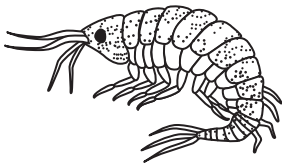
CRAYFISH



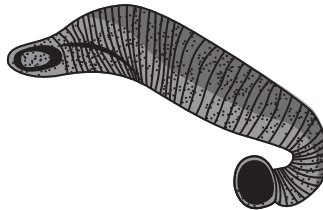
ORB SNAIL



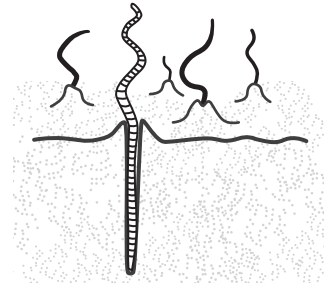
AQUATIC SOW BUG



**SCUD
(AMPHIPOD)**



LEECH



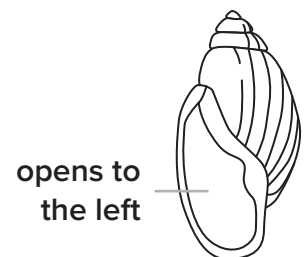
AQUATIC WORM



**MIDGE
(LARVA)**



**MIDGE
(PUPA)**



opens to
the left

POUCH SNAIL



FLATWORM



**NEMATODE OR
THREADWORM**